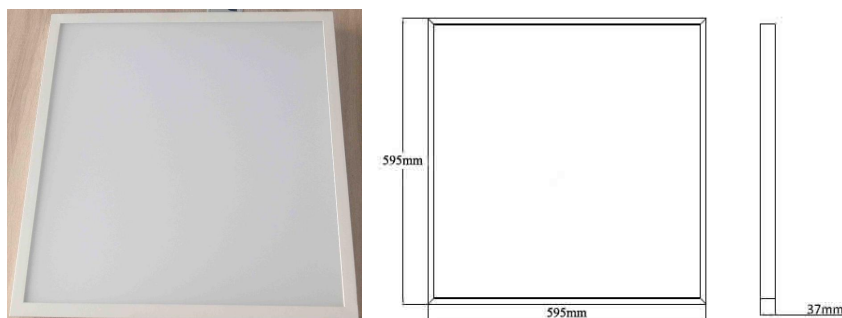


# 40W Backlit LED Panel Data sheet



## Features

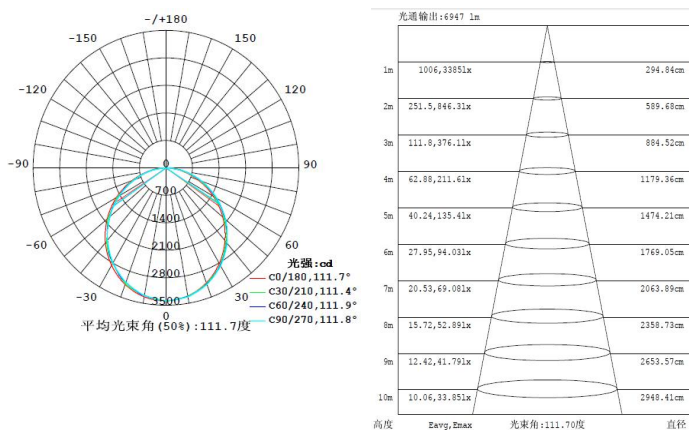
- High luminous efficiency technology
- No flicker design
- Grove backboard design
- High CRI : Ra>80
- UGR:  $\leq 17$
- PF:  $> 0.95$

## 40W backlit Panel light specification

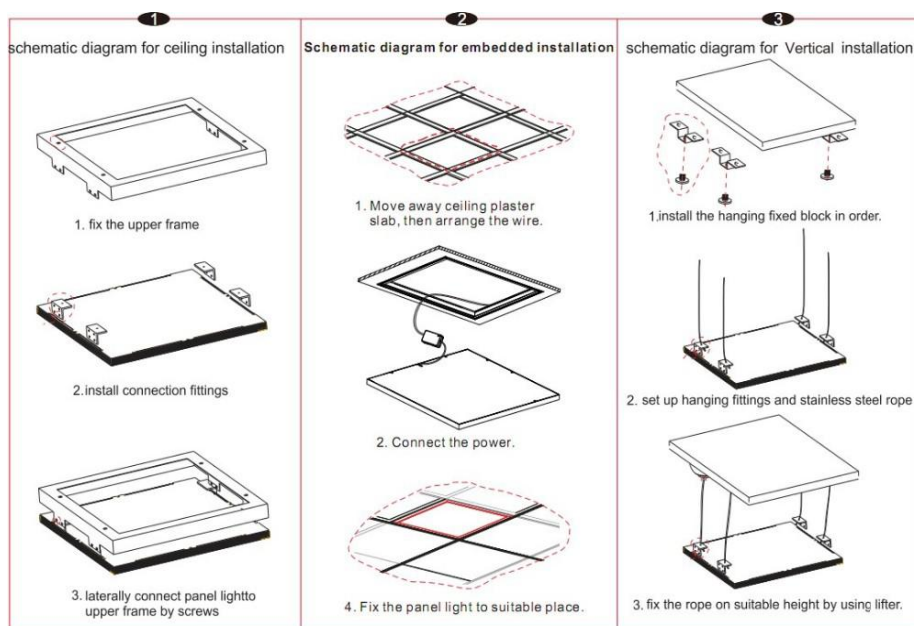
Size: 595X595X37mm

- Power: 40w
- Lumen: 5600lm
- Efficacy: 140 lm/w
- LED source: SMD 2835
- Material: Aluminum + PMMA
- Driver: TUV CE
- CRI:  $> 80Ra$
- Power factor:  $> 0.95$
- UGR:  $\leq 17$
- Flicker: No flicker
- Input voltage: AC85-265v
- Color temperature: 2700-6500k
- LED life time: 50000hour
- Warranty : 5 Years
- package: 6pcs/CT
- packing size: 650x140x850mm

## Light distribution curve



## 3 options of Installation



Surfaced

Recessed

Suspended



Contact us: Tel:+86-755-83984608

Email: Billyzh@alflite.com

Specifications above are for reference only and may vary without prior notice