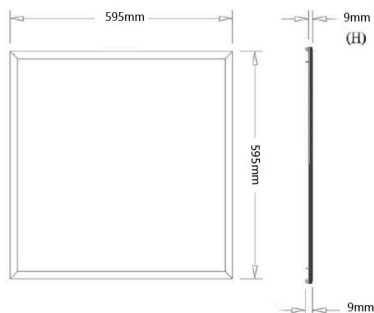
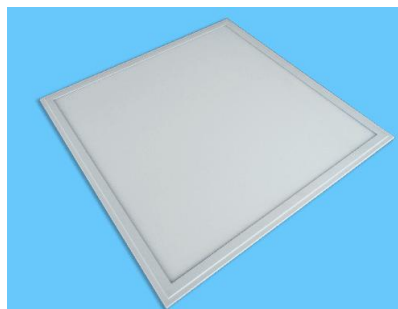


40W Edge light LED Panel Data sheet



Features

- High luminous efficiency technology
- No flicker design
- Excellent driver design
- High CRI : Ra>80
- Dali Dimmable/Triac Dimmable
- PF>0.9

40W Edge Light Panel light specification

Size: 595X595X9mm

Power: 40w

Efficacy: 100 lm/w

lumen: 4000lm

LED source: Epistar SMD 2835(Nichia is optional)

Material: Aluminum + PMMA

Driver: TUV CE

CRI: > 80Ra

Power factor: >0.9

Flicker: No flicker

Input voltage: AC85-265v

Color temerature: 2700-6500k

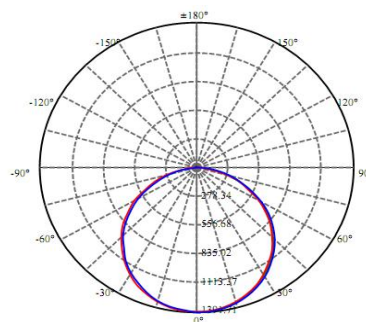
LED life time: 50000hour

Warranty: 3 Years

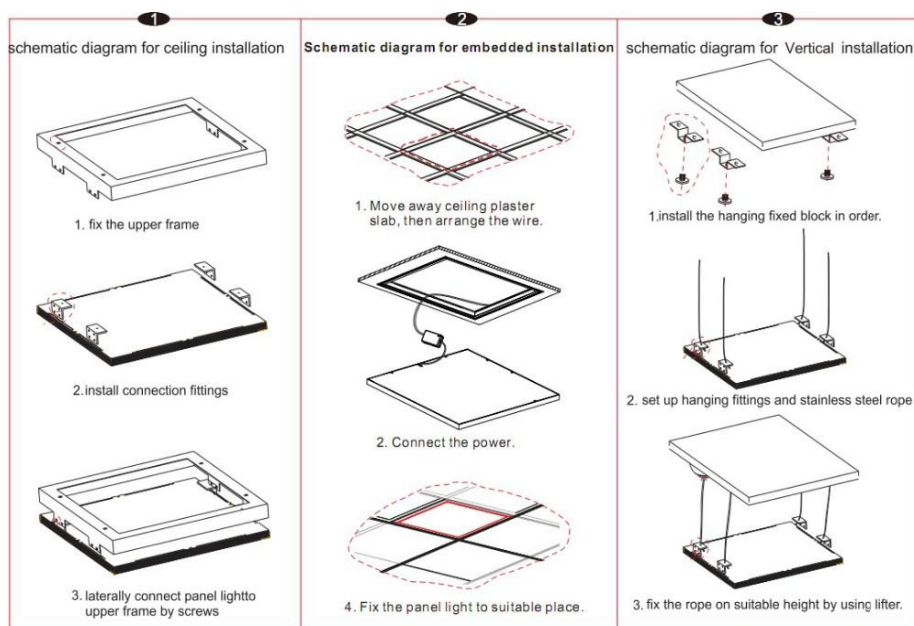
package: 6pcs/CT

packing size: 650x140x680mm

Light distribution curve



3 options of Installation



Surfaced

Recessed

Suspended



Contact us: Tel:+86-755-83984608

Email: Billyzh@alflite.com

.Specifications above are for reference only and may vary without prior notice