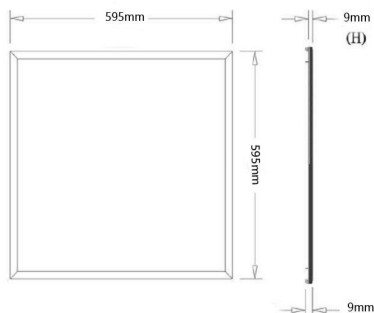
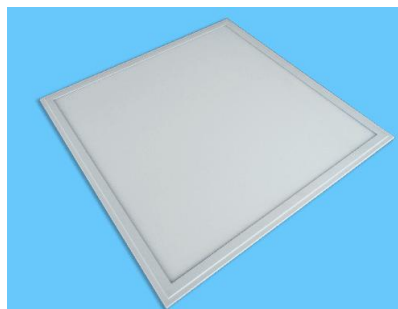


40W Edge light LED Panel Data sheet



Features

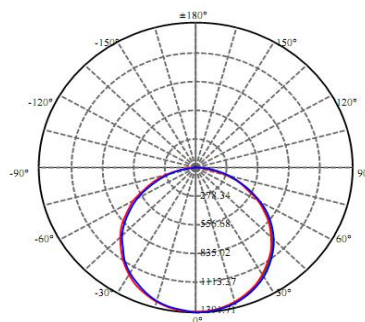
- High luminous efficiency technology
- No flicker design
- Excellent driver design
- High CRI : Ra>80
- Dali Dimmable/Triac Dimmable
- PF>0.9

40W Edge Light Panel light specification

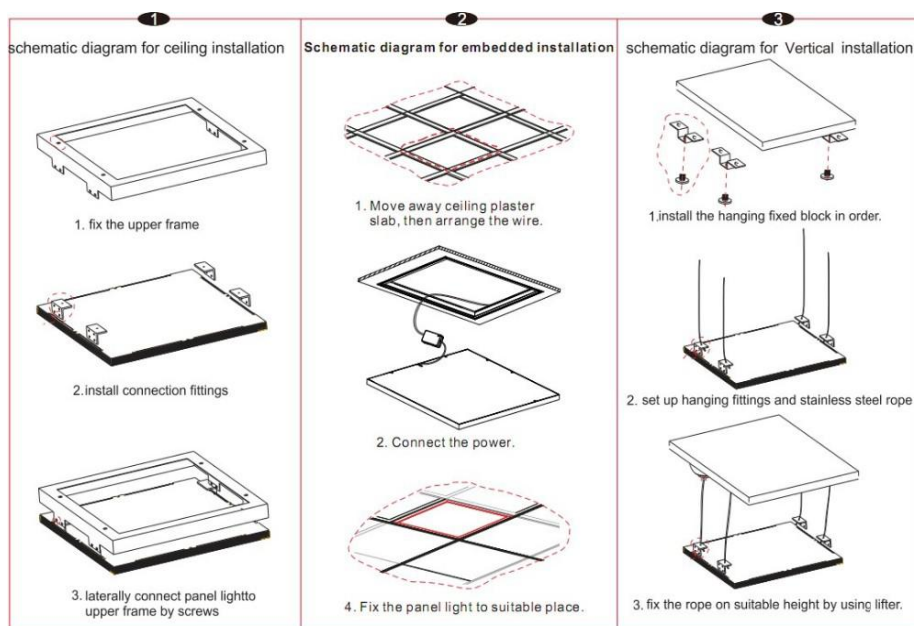
Size: 595X595X9mm

- Power: 36w
- Efficacy: 100 lm/w
- lumen: 3600lm
- LED source: Epistar SMD 2835(Nichia is optional)
- Material: Aluminum + PMMA
- Driver: TUV CE
- CRI: > 80Ra
- Power factor: >0.9
- Flicker: No flicker
- Input voltage: AC85-265v
- Color temperature: 2700-6500k
- LED life time: 50000hour
- Warranty: 3 Years
- package: 6pcs/CT
- packing size: 650x140x680mm

Light distribution curve



3 options of Installation



Surfaced

Recessed

Suspended



Contact us: Tel:+86-755-83984608

Email: Billyzh@alflite.com

.Specifications above are for reference only and may vary without prior notice